

Batch Mirror Component Creator Training

BatchMirrorComponentCreator_Training_EN.zip



Batch Mirror Component Creator - Overview

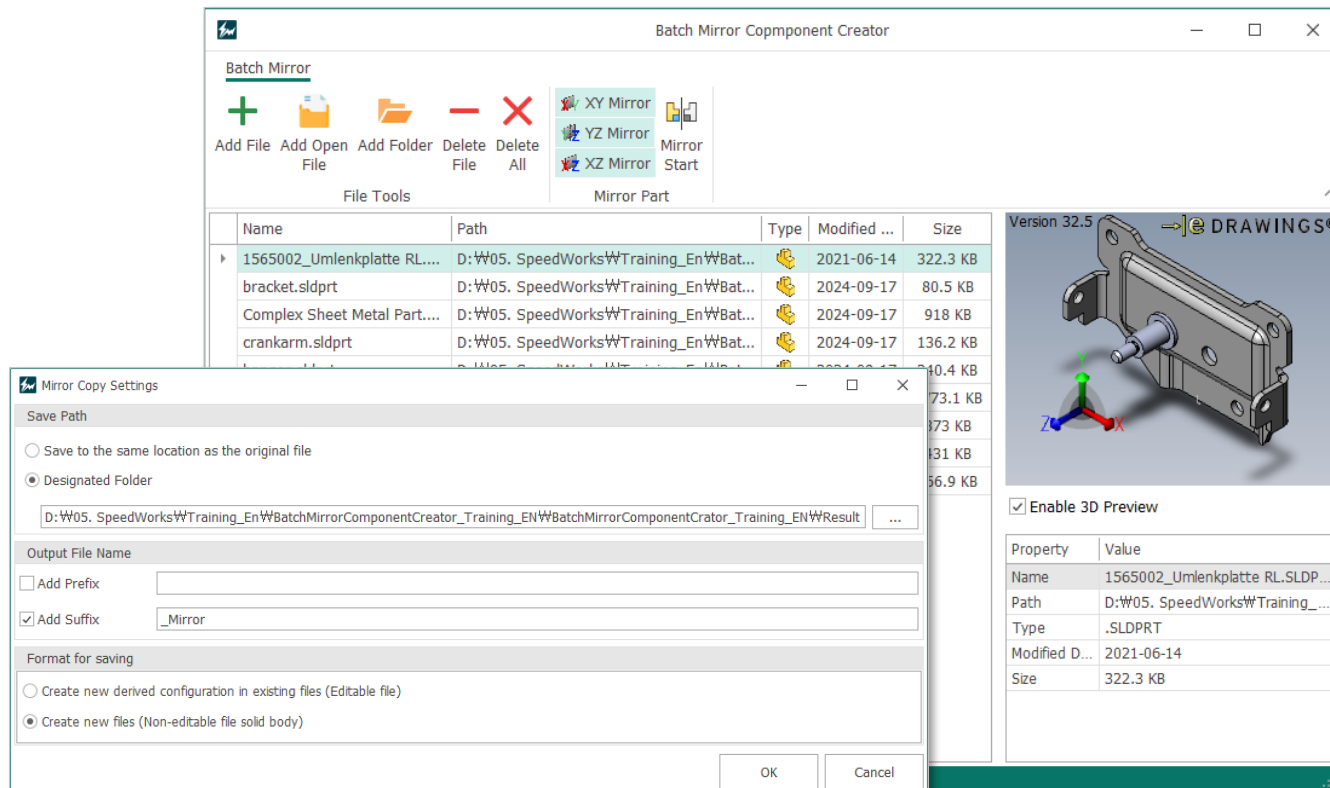
Key Features

- Provides three types of mirroring options
- Supports batch mirroring of multiple part files
- Allows user-defined save path and file naming

Work Benefits

- Automates the mirror copy process
- Reduces work time through folder-based batch processing
- Minimizes human error from repetitive tasks

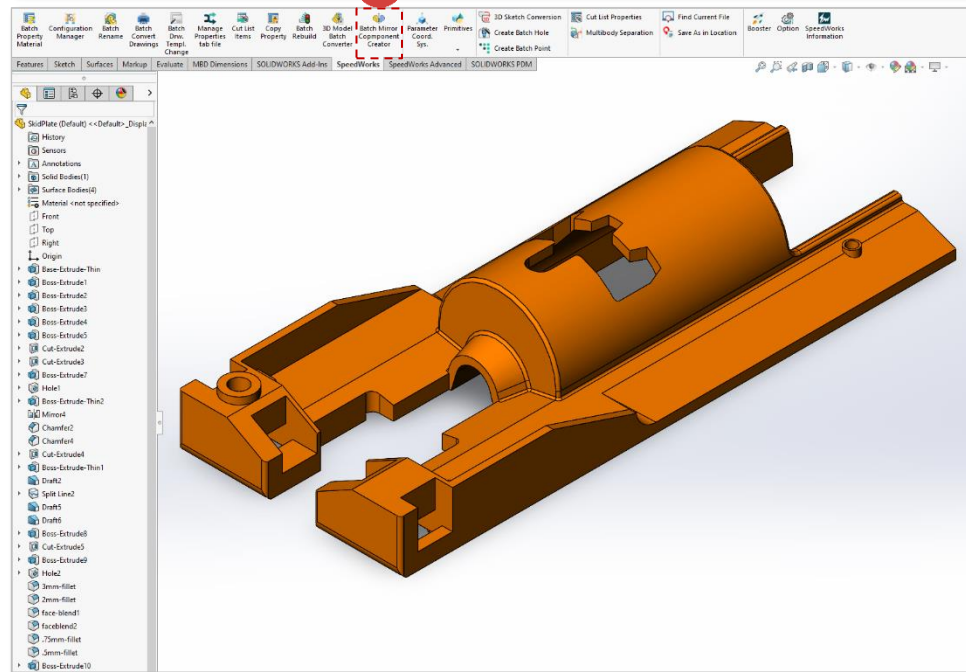
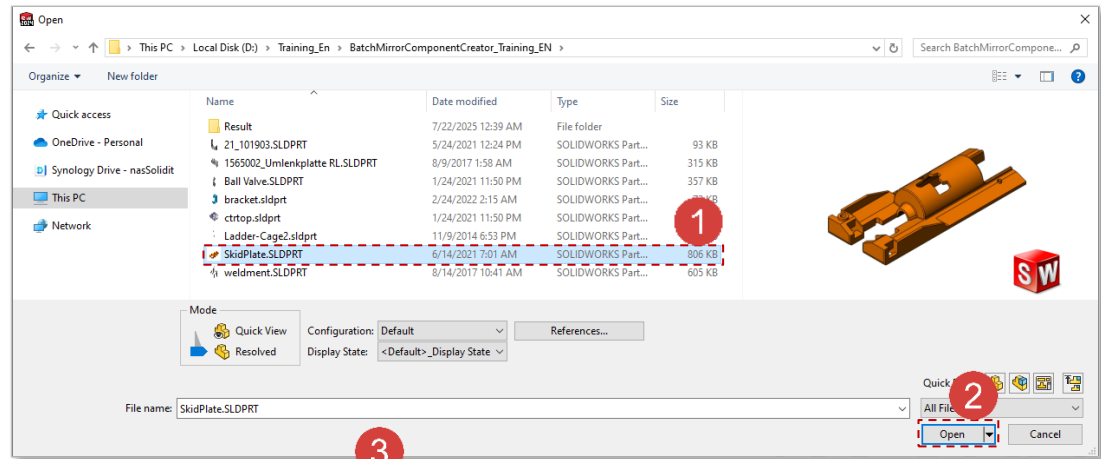
Lecture Objective: Learn how to Batch Mirror Component Creator by following the tutorial.



Batch Mirror Component Creator - Execution

Work on the part with the red circle (1) following instructions by yourself.
The part with the black square (1) is an additional explanation or a reference.

- 1 Select **SkidPlate.SLDPRT** from the example files.
- 2 Click the [Open] button.
- 3 Go to the [SpeedWorks] tab and click [Batch Mirror Component Creator].

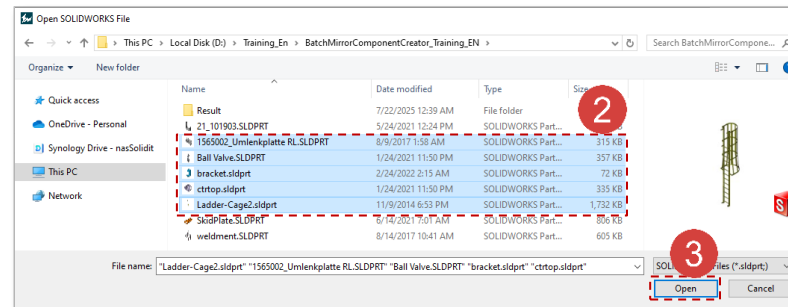
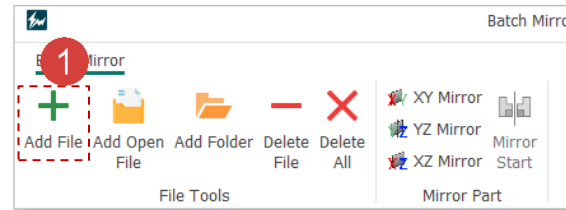


※ You can download example files at Support page in SpeedWorks Homepage(<https://speedworks.info>).

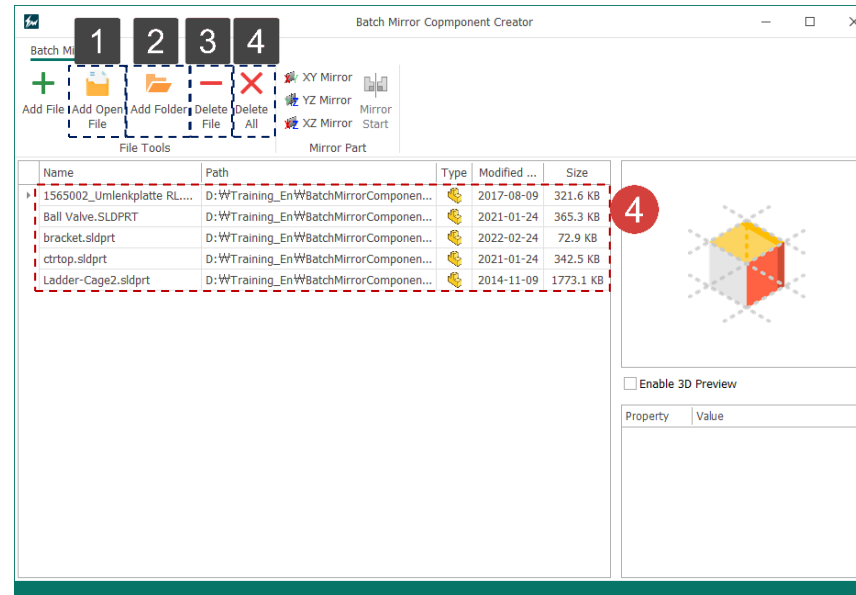
Batch Mirror Component Creator - Add File

Work on the part with the red circle (1) following instructions by yourself.
The part with the black square (1) is an additional explanation or a reference.

- 1 Click the **[Add File]** button.
- 2 Select **1565002_Umlenkplatte RL.SLDPRT**, **Ball Valve.SLDPRT**, **bracket.sldprt**, **ctrtop.sldprt**, **Ladder-Cage2.sldprt** from the example files.
- 3 Click the **[Open]** button.
- 4 The selected files will be added to the list.



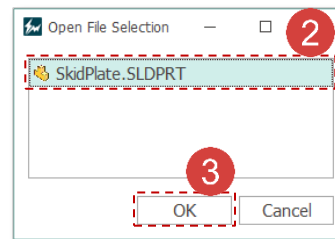
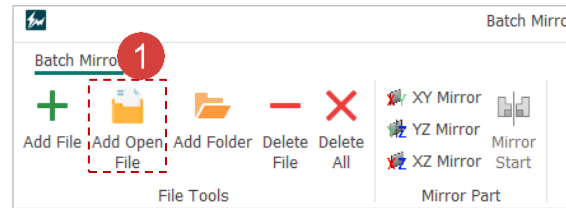
- 1 You can add the currently open file using the **[Add Open File]** button.
- 2 Use the **[Add Folder]** button to batch add all SOLIDWORKS files in a folder.
- 3 Use the **[Delete Selected]** button to remove selected files in batch.
- 4 Click the **[Delete All]** button to remove all files.



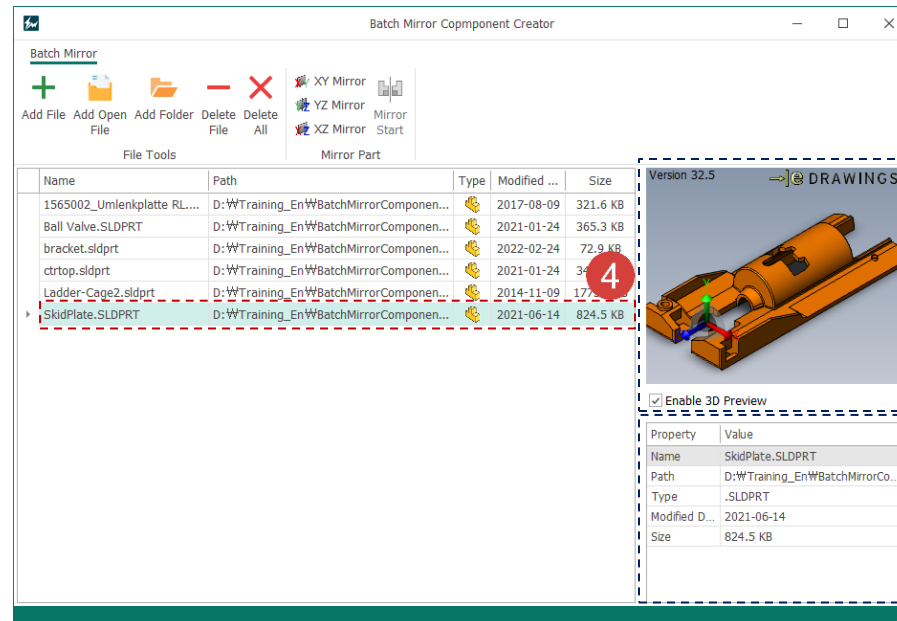
Batch Mirror Component Creator - Add Open File

Work on the part with the red circle (1) following instructions by yourself.
The part with the black square (1) is an additional explanation or a reference.

- 1 Click the **[Add Open File]** button.
- 2 Select the **SkidPlate.SLDPRT** file.
- 3 Click the **[OK]** button.
- 4 An open file is added to the list.



- 1 If you check **[Enable 3D Preview]** and select a part file, you can preview it with eDrawings 3D Viewer.
- 2 If you select a file from the file list, you can check the main information of the file.



Batch Mirror Component Creator - Execute Mirroring

Work on the part with the red circle (1) following instructions by yourself.
The part with the black square (1) is an additional explanation or a reference.

1 Click [XZ Mirror], [YZ Mirror], and [XZ Mirror].

2 Click the [Mirror Start] button.

3 Check the [Create New Files(Non-editable file solid body)] option.

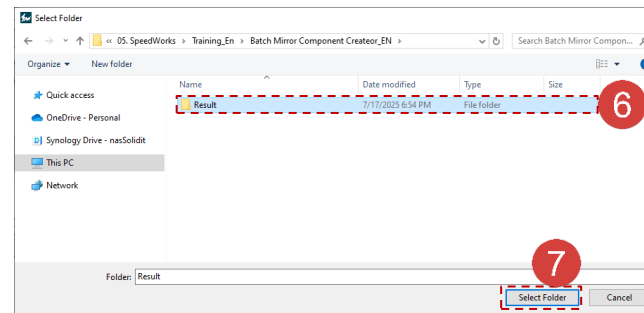
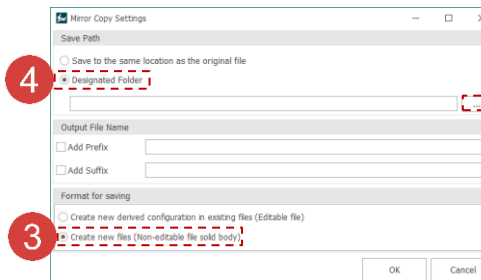
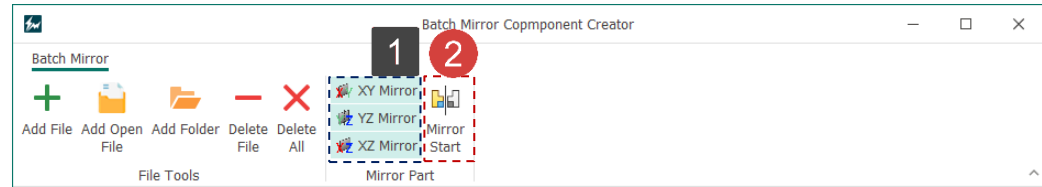
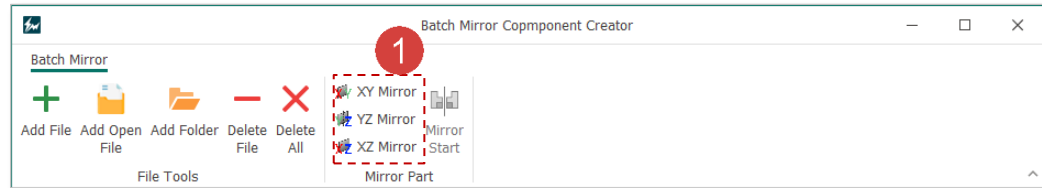
4 Check the [Designated Folder] option.

5 Click the [...] button.

6 Select the **RESULT** folder from the example files.

7 Click the [Select Folder] button.

1 You can select multiple mirror axes.

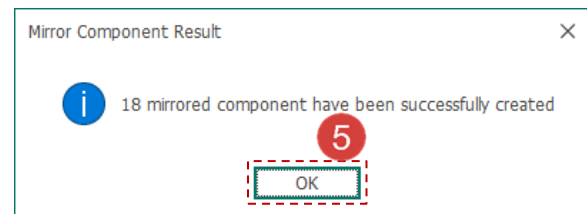
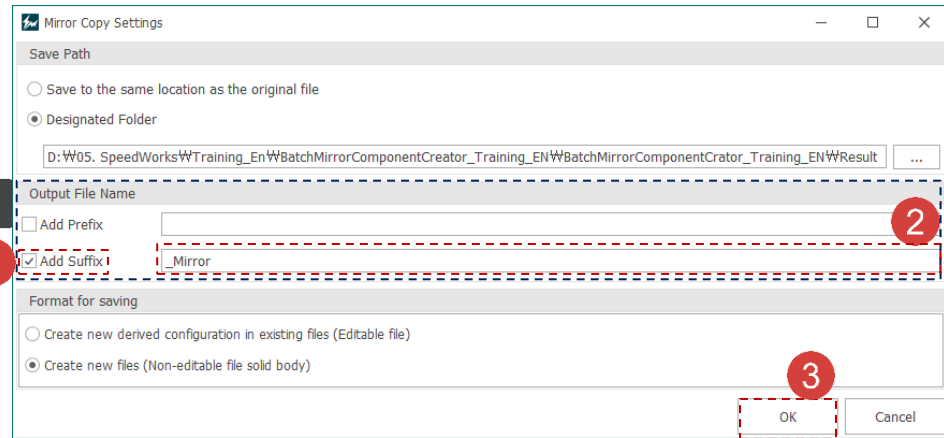


Batch Mirror Component Creator - Execute Mirroring

Work on the part with the red circle (1) following instructions by yourself.
The part with the black square (1) is an additional explanation or a reference.

- 1 Check the **[Add Suffix]** option.
- 2 Enter “**_Mirror**” in the text box.
- 3 Click the **[OK]** button.
- 4 When the mirror process starts, you can monitor its progress on the screen.
- 5 Once completed, click the **[OK]** button.

-
- 1 If you don't set a prefix or suffix, the program will automatically append a name to the file.

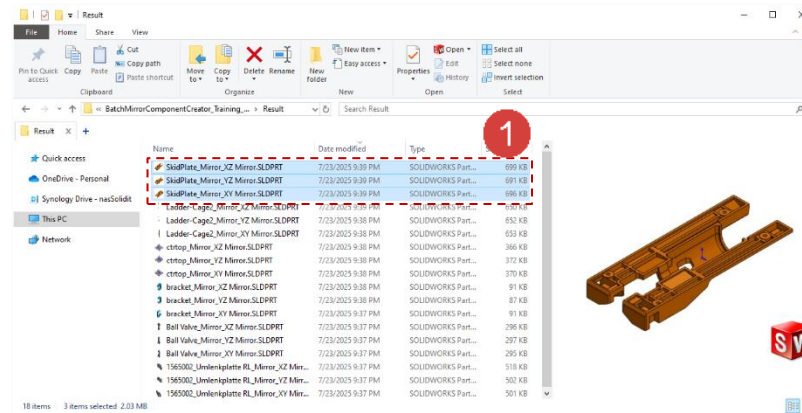


Batch Mirror Component Creator - New File Mirror Create Result

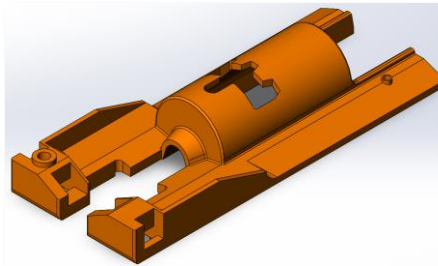
Work on the part with the red circle (1) following instructions by yourself.
The part with the black square (1) is an additional explanation or a reference.

1 Open the **RESULT** folder from the example files. The mirrored copies are saved there. Select the mirrored **SkidPlate.SLDPRT** files and open them.

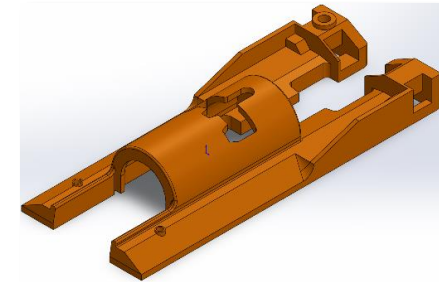
2 In the bottom right image, you can compare the original part and the mirrored copies.



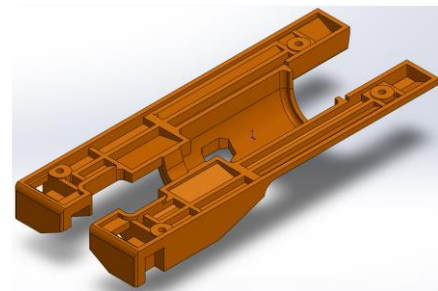
[Original Part]



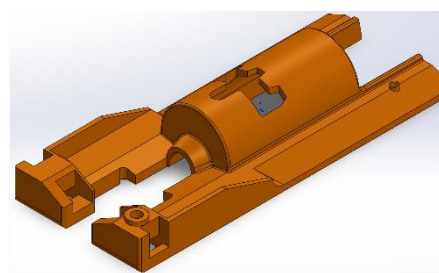
[XY Mirror]



[XZ Mirror]



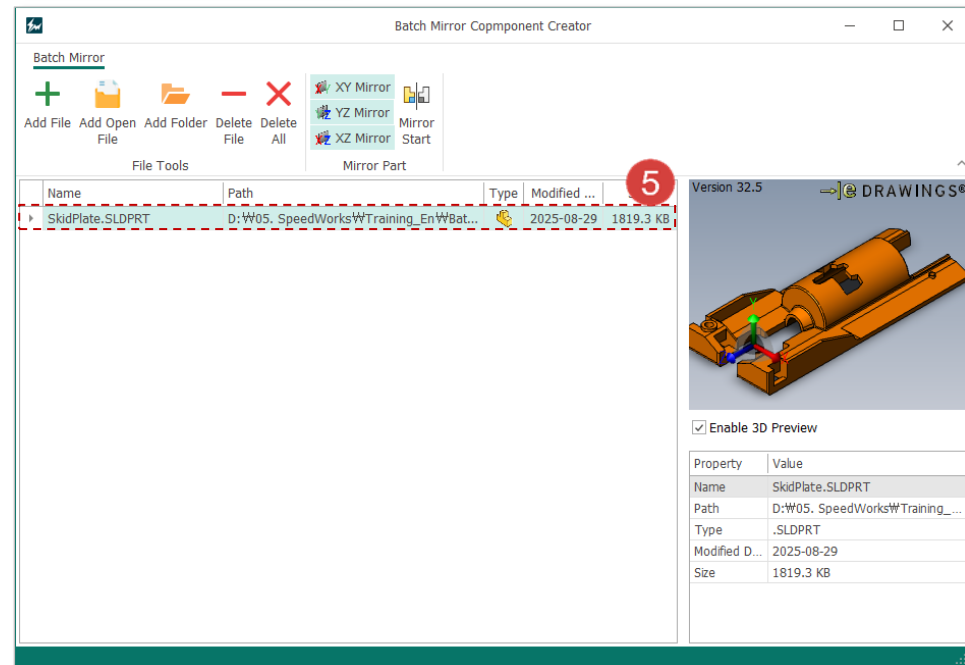
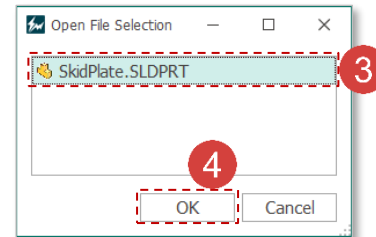
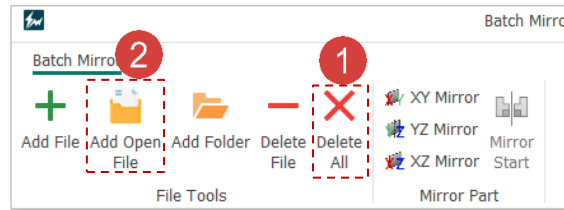
[YZ Mirror]



Batch Mirror Component Creator - Delete All and Add Open File

Work on the part with the red circle (1) following instructions by yourself.
The part with the black square (1) is an additional explanation or a reference.

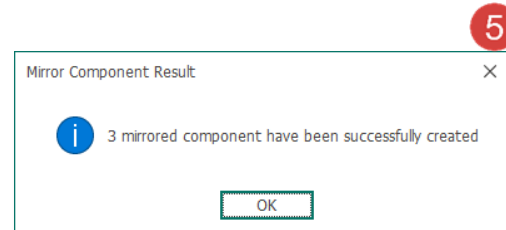
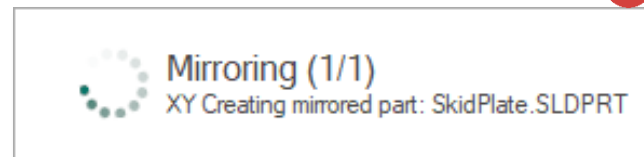
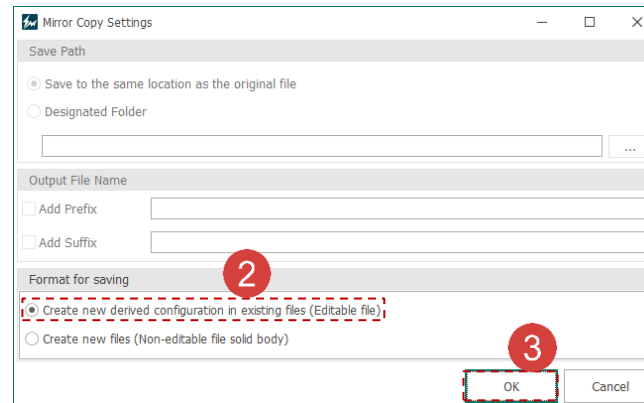
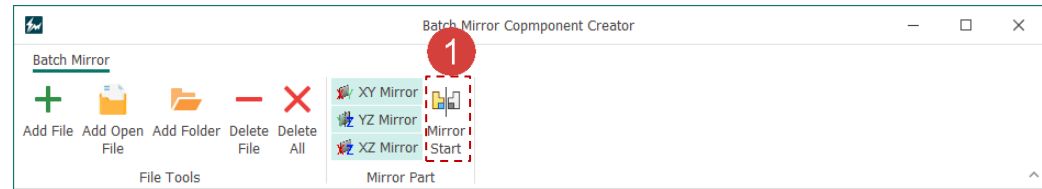
- 1 Click the **[Delete All]** button.
- 2 Click the **[Add Open File]** button.
- 3 Select the **SkidPlate.SLDPRT** file.
- 4 Click the **[OK]** button.
- 5 An open file is added to the list.



Batch Mirror Component Creator - Execute Derived Mirror in Existing File

Work on the part with the red circle (1) following instructions by yourself.
The part with the black square (1) is an additional explanation or a reference.

- 1 Click the **[Mirror Start]** button.
- 2 check the **[Create new derived configuration in existing files (Editable file)]** option.
- 3 Click **[OK]** button.
- 4 When the mirror process starts, you can monitor its progress on the screen.
- 5 Once completed, click the **[OK]** button.



Batch Mirror Component Creator - Mirror Creation Result in Existing File

Work on the part with the red circle (1) following instructions by yourself.
The part with the black square (1) is an additional explanation or a reference.

- 1 Open the mirrored file **SkidPlate.SLDPRT** from the sample files folder.
- 2 As you can see in the image at the bottom right, the mirrored copy has been created in the original part file as a sub-configuration

